

SATREPS

Lima **TIME** **T**sunami **I**nundation **M**apping **E**fforts

Shunichi KOSHIMURA
Tohoku University



JST/JICA SCIENCE AND TECHNOLOGY RESEARCH PARTNERSHIP FOR SUSTAINABLE DEVELOPMENT
ENHANCEMENT OF EARTHQUAKE AND TSUNAMI DISASTER MITIGATION TECHNOLOGY IN PERU
TSUNAMI RESEARCH GROUP G2

1

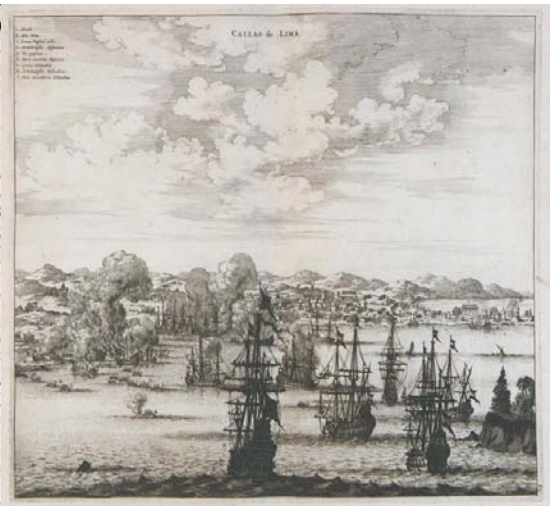




The 1746 earthquake tsunami Callao, Lima

The 1746 earthquake tsunami
attacking the coast of Callao, Lima

Port of Callao in 16th Century



© DHN

Lima TIME

Tsunami Inundation Mapping Efforts

- ✓ **Understand tsunami**
- ✓ **Learn how to survive**
- ✓ **Increase awareness**
- ✓ **Take action**



JST/JICA SCIENCE AND TECHNOLOGY RESEARCH PARTNERSHIP FOR SUSTAINABLE DEVELOPMENT
ENHANCEMENT OF EARTHQUAKE AND TSUNAMI DISASTER MITIGATION TECHNOLOGY IN PERU
TSUNAMI RESEARCH GROUP G2

5

Lima TIME

Tsunami Inundation Mapping Efforts

Members

- **Shunichi Koshimura (Tohoku University)**
- **Bruno Adriano & Erick Mas (Tohoku University, from CISMID/UNI)**
- **Cesar Jimenez & Aste Evans Atilio (DHN)**
- **Miguel Estrada, Carlos Zavala & Rafael Salinas (CISMID/UNI)**
- **Alberto Bisbal (INDECI)**

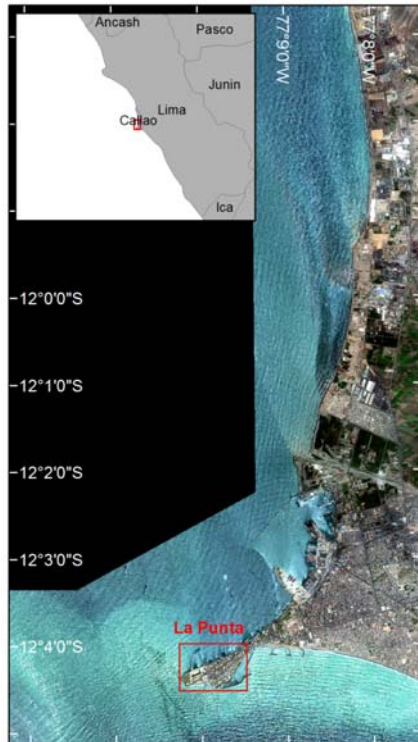


JST/JICA SCIENCE AND TECHNOLOGY RESEARCH PARTNERSHIP FOR SUSTAINABLE DEVELOPMENT
ENHANCEMENT OF EARTHQUAKE AND TSUNAMI DISASTER MITIGATION TECHNOLOGY IN PERU
TSUNAMI RESEARCH GROUP G2

6

Study area

Study area for the inundation modeling



La Punta district

- Inhabitants about 4,370.
- The buildings present are used as residence (771).
- Area = 0.75 km²



WorldView-2 satellite image, spatial resolution = 2 m

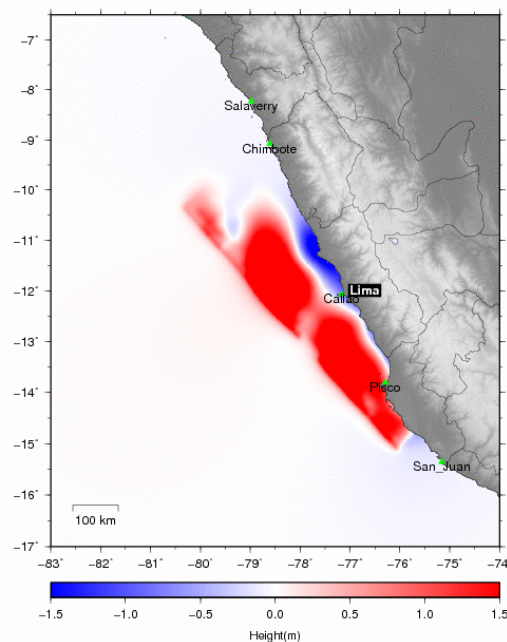


JST/JICA SCIENCE AND TECHNOLOGY RESEARCH PARTNERSHIP FOR SUSTAINABLE DEVELOPMENT
 ENHANCEMENT OF EARTHQUAKE AND TSUNAMI DISASTER MITIGATION TECHNOLOGY IN PERU
 TSUNAMI RESEARCH GROUP G2

7

TSUNAMI SOURCE (M8.9 earthquake)

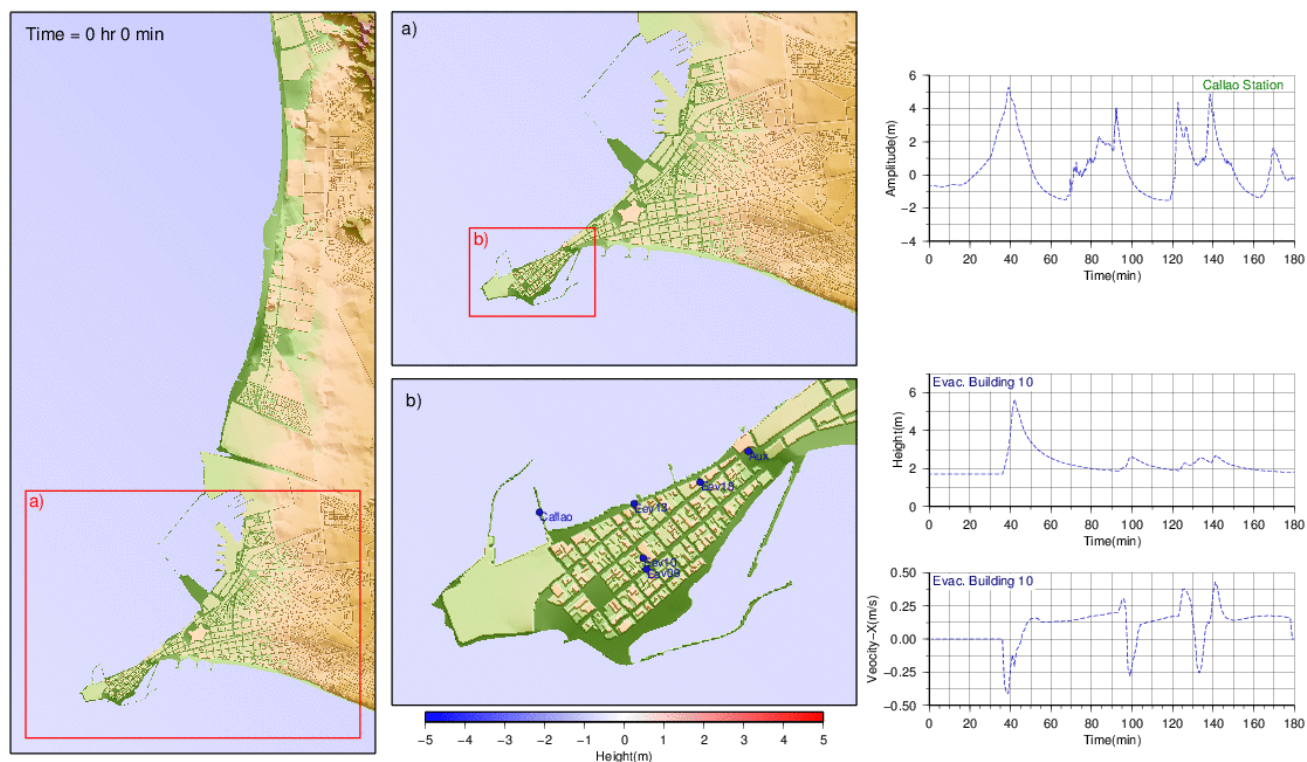
Source Model - Pulido 2011 1746 Peru Earthquake 0 min



JST/JICA SCIENCE AND TECHNOLOGY RESEARCH PARTNERSHIP FOR SUSTAINABLE DEVELOPMENT
 ENHANCEMENT OF EARTHQUAKE AND TSUNAMI DISASTER MITIGATION TECHNOLOGY IN PERU
 TSUNAMI RESEARCH GROUP G2

8

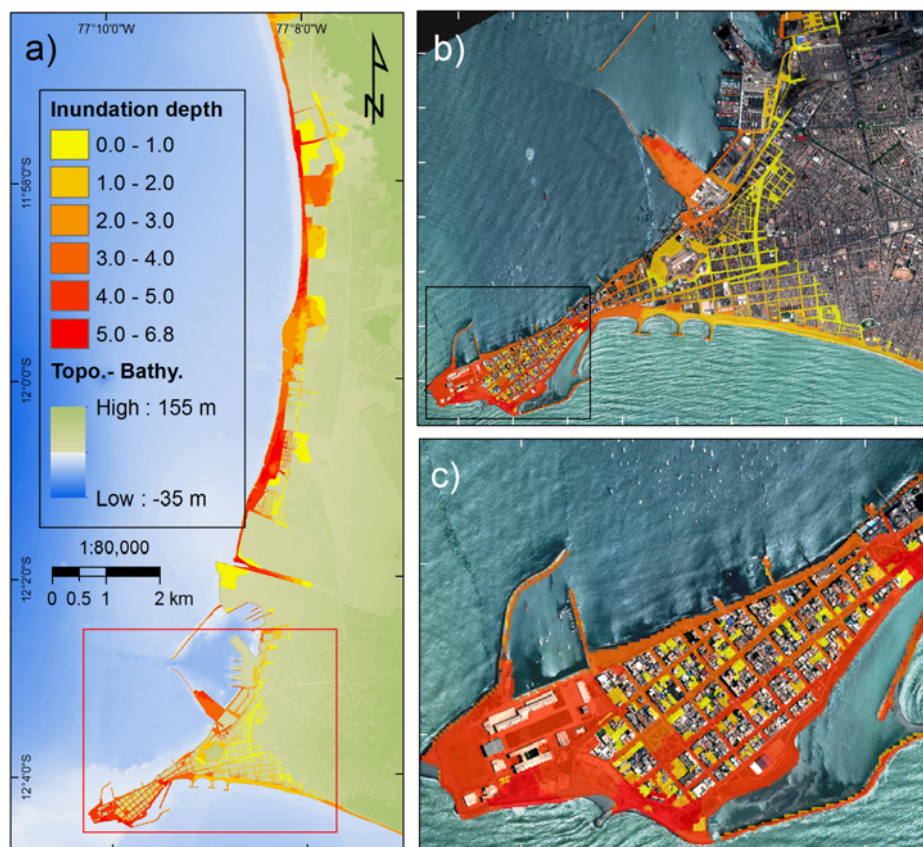
Tsunami risk assessment along the Peruvian coast . Mapping tsunami inundation in Callao



JST/JICA SCIENCE AND TECHNOLOGY RESEARCH PARTNERSHIP FOR SUSTAINABLE DEVELOPMENT
 ENHANCEMENT OF EARTHQUAKE AND TSUNAMI DISASTER MITIGATION TECHNOLOGY IN PERU
 TSUNAMI RESEARCH GROUP G2

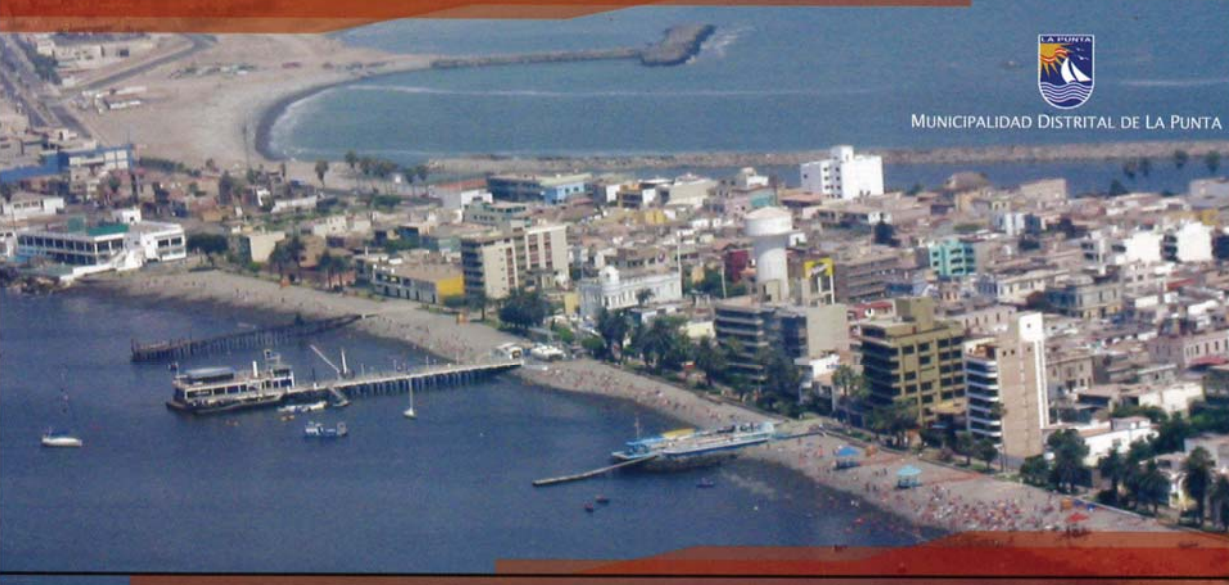
9

Inundation map



JST/JICA SCIENCE AND TECHNOLOGY RESEARCH PARTNERSHIP FOR SUSTAINABLE DEVELOPMENT
 ENHANCEMENT OF EARTHQUAKE AND TSUNAMI DISASTER MITIGATION TECHNOLOGY IN PERU
 TSUNAMI RESEARCH GROUP G2

10

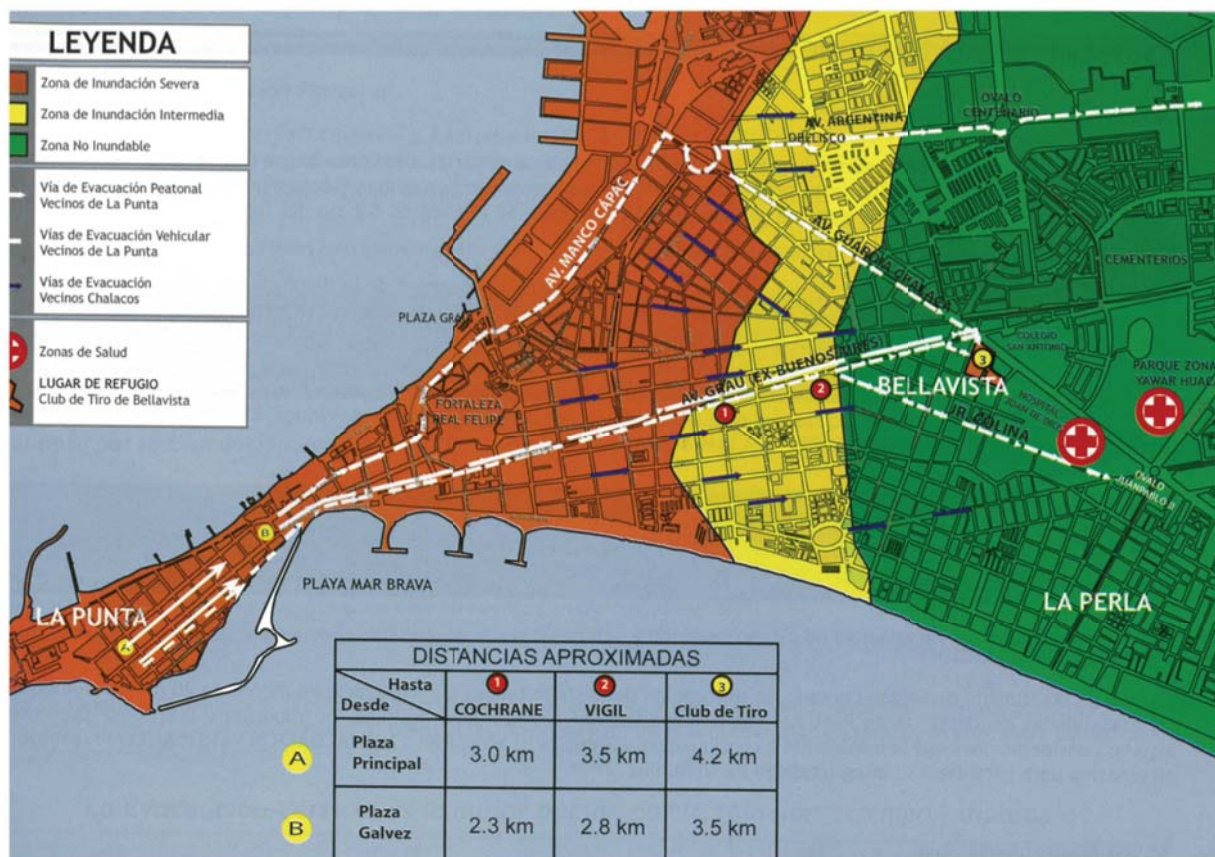



MUNICIPALIDAD DISTRITAL DE LA PUNTA

PLAN TSUNAMI LA PUNTA 2010

Debido a su ubicación geográfica, nuestro distrito se encuentra permanentemente expuesto al peligro de Tsunamis.

Este plan presenta los aspectos más importantes del tema y orienta al vecino, cómo debe actuar frente a la amenaza de este fenómeno natural.



Tsunami Evacuation Buildings

1 Jr. Sáenz Peña N° 275 y 285 Capacidad: 540 personas	2 Jr. Sáenz Peña cdra. 4 Capacidad: 160 personas	3 Jr. Larco N° 151 Capacidad: 70 personas	4 Jr. Arrieta N° 295 Capacidad: 200 personas	5 Jr. Arrieta N° 320 Capacidad: 1,450 personas	6 Jr. Arrieta N° 492 Capacidad: 25 personas
7 Av. Bolognesi N° 508 Capacidad: 50 personas	8 Av. Bolognesi N° 11 Capacidad: 120 personas	9 Av. Bolognesi cdra. 1 Capacidad: 100 personas	10 Jr. Trete. Palacios N° 375 Capacidad: 60 personas	11 Jr. Ferré N° 460 Capacidad: 220 personas	12 Jr. Figueredo N° 470 Capacidad: 110 personas
13 Jr. Figueredo N° 520 Capacidad: 30 personas	14 Jr. More N° 496 Capacidad: 165 personas	15 Jr. More N° 380 Capacidad: 75 personas	16 Jr. Tarapacá N° 155 Capacidad: 105 personas	17 Jr. Elias Aguirre N° 155 Capacidad: 450 personas	18 Jr. Tarapacá 208 Capacidad: 200 personas

1 mensaje de texto puede tardar pero ¡SIEMPRE LLEGA!

Luego de un terremoto, las líneas telefónicas suelen colapsar, impidiendo la comunicación con nuestros seres queridos.

Por esta razón, es recomendable utilizar los MENSAJES DE TEXTO (SMS), debido a que congestionan las redes mucho menos que las llamadas telefónicas. Además, a diferencia de éstas, si el sistema se sobrecarga los SMS pasarán a lista de espera, por lo que siempre llegarán a su destino.

¡Aprenda ahora a enviar y recibir mensajes de texto!



JST/JICA SCIENCE AND TECHNOLOGY RESEARCH PARTNERSHIP FOR SUSTAINABLE DEVELOPMENT
ENHANCEMENT OF EARTHQUAKE AND TSUNAMI DISASTER MITIGATION TECHNOLOGY IN PERU
TSUNAMI RESEARCH GROUP G2

Lima **TIME** **T**sunami **I**nundation **M**apping **E**fforts

- ✓ Understand tsunami
- ✓ Learn how to survive
- ✓ Increase awareness
- ✓ Take action



JST/JICA SCIENCE AND TECHNOLOGY RESEARCH PARTNERSHIP FOR SUSTAINABLE DEVELOPMENT
ENHANCEMENT OF EARTHQUAKE AND TSUNAMI DISASTER MITIGATION TECHNOLOGY IN PERU
TSUNAMI RESEARCH GROUP G2