

# Research plan on group 5



Prof. Dr. Hidehiko KANEGAE  
Ritsumeikan University  
16/03/2010

Kobe-Earthquake in 1995

## Frequent Disasters in the World



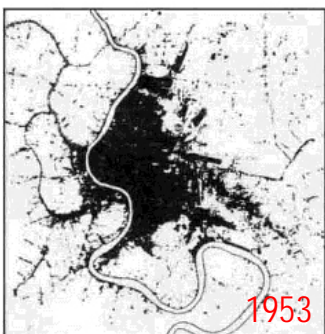
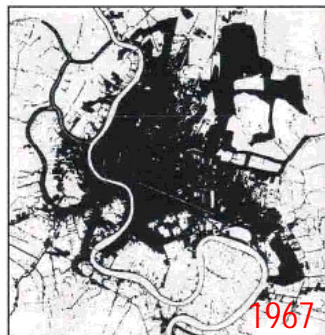
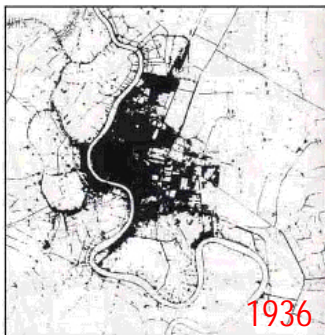
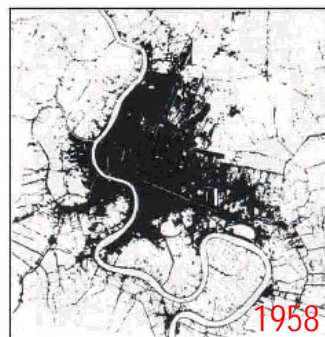
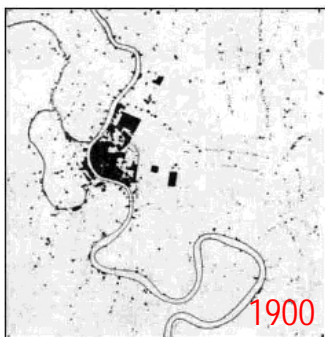
12/05/2008 M8.0  
Quake Sichuan, China  
(victims/deaths: 90,000 )



26/12/2004 M9.3  
Sumatra Quake & Tsunami Indonesia  
(victims/deaths: 300,000 )

# Mission & Goals of G5

- Integration of output from G1 to G4
- Land-use planning integrating with disaster mitigation towards target year (20 years)  
(including land-use prediction)
- Preparedness/ Mitigation/ Adaptation/  
(retrofit/regulation/ strengthen public building/ and response phase
- Public awareness based on a risk map  
(district-wide assessment)



## Land-use



Lima 2010



Independencia 2010

<- Urban expansion of Bangkok

# People's awareness

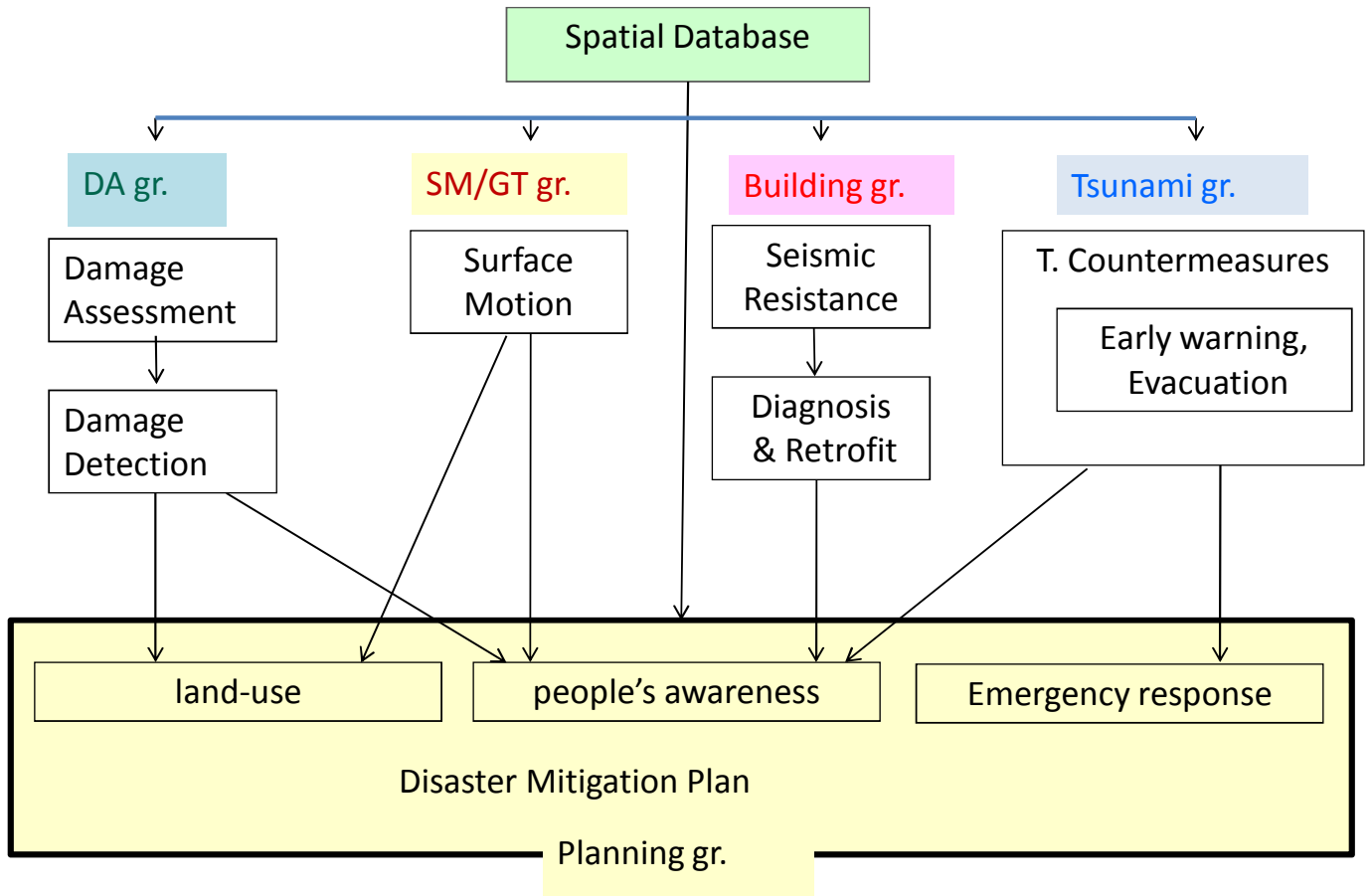


Micro levels or local levels risk communication through gaming and field experiences.

# Emergency response



# Research Topics and Groups



Thanks

# Agenda: What should we do?

- Problem identifications of cities in Peru
- Microzonation & Master planning
- Social, economical, legislative/institutional aspects
- Land use & urban planning for urban expansion/ migration
- Response phase/ different strategies

---

## Soft approach

- City planning and lanuse
- Based on INDECI  
(National Institute of Defence )  
NGO/NPO and Awareness

# Target Area/ case studies

## PENDING

- Metropolitan Lima
- Airport area in Lima (Callao)
- City Center of Lima (Lima & Rimac)
- Hillside of Lima (Independencia)
- Pisco
- Southernpart of Peru
- Northernpart of Peru
- Assigned by Yamazaki